



NEON 3D Bending 16x18mm / 14W / 24V

Product No. : IP67 LSN14WTS-P7-G1 28AH9x 24V120S3 1618L05

Technical Details

Product No. LSN14WTS-P7-G1 28AH9x 24V120S3 1618L05

Power	14W/M 4.27W/ft
Voltage	DC24V
CRI	90
Led Qty	120LEDs/M 36LEDs/ft
Length/Reel	5M 16.56ft
Working Temperature	-25°C ~ +60°C
Storage Temperature	-30°C ~ +80°C
Voltage Range	23 -25V dc
Reverse Voltage	25V dc

- Free bending and Twist-able, High efficacy 2835 LED inside.
- Dual-color silicone extrusion,UV and yellowish resistant.
- IP67 and salt-mist proof.
- Easy installation.

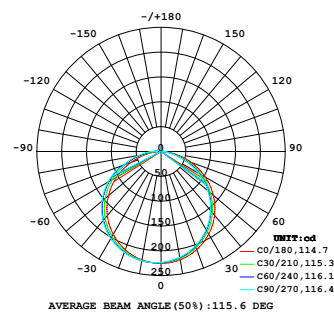


Lumens

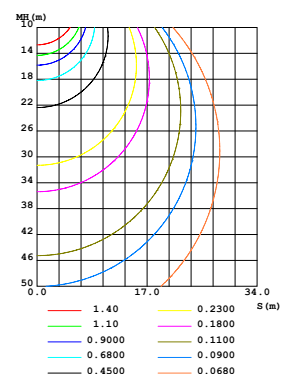
Color Temperature		
● 2700K	700lm/m	213lm/ft
● 3000K	740lm/m	225lm/ft
● 4000K	760lm/m	232lm/ft
● 5000K	760lm/m	232lm/ft
● 6000K	760lm/m	232lm/ft

Light Distribution

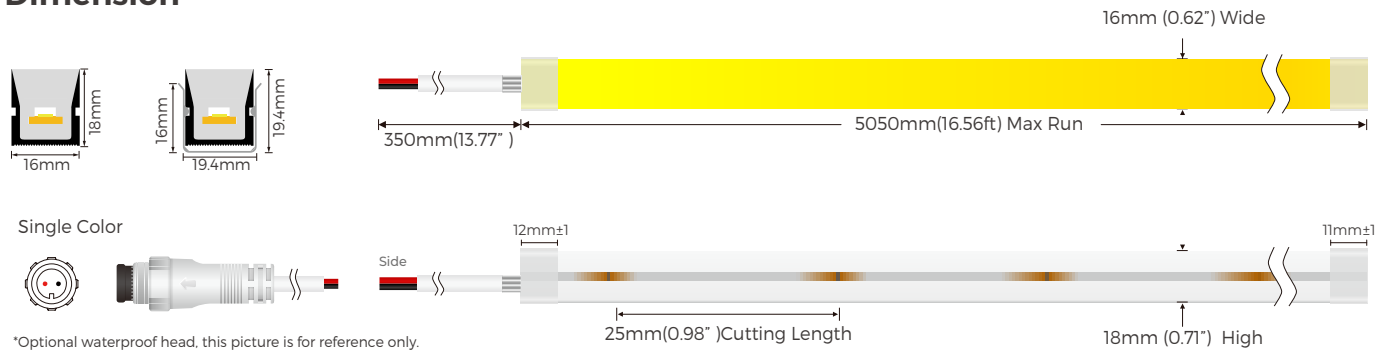
LUMINOUS INTENSITY DISTRIBUTION DIAGRAM



CO PLANE ISOLUX DIAGRAM (UNIT:lx)



Dimension



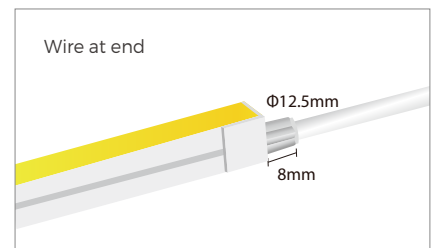
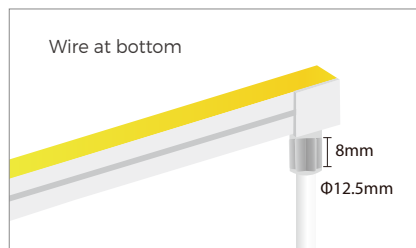
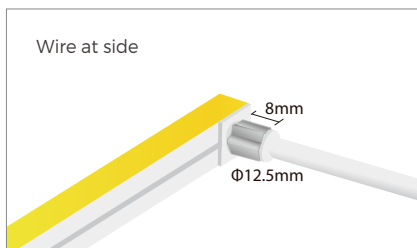
Single Color



*Optional waterproof head, this picture is for reference only.

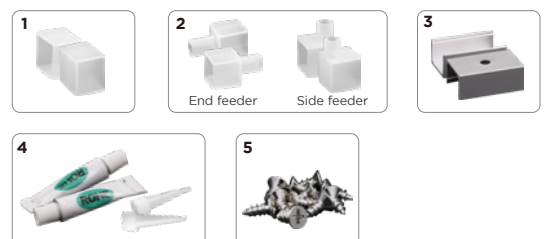
End cap

Products	Wire at end	Wire at side	Wire at bottom
Ordinary End Cap			

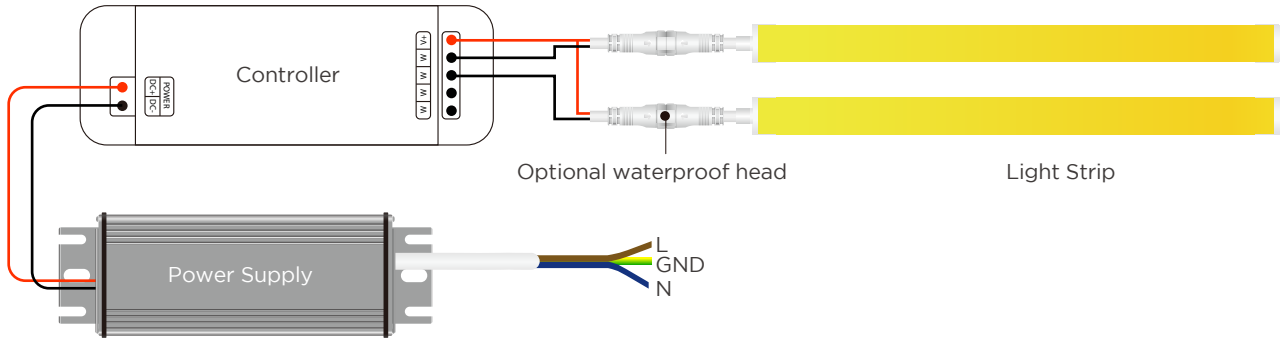


Accessories Specification


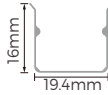


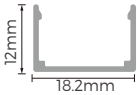


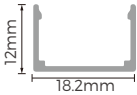

Name	Quantity	Note
1. End cap	4pc	
2. Front outlet end cap	2pc	*Optional
3. Clips	10pc	
4. Glue & Glue nozzle	2pc	
5. Screw	10pc	



Power Connection Diagram



Aluminum Profile List

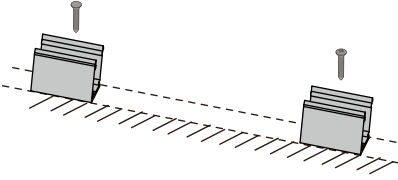
	Section diagram	install
Stainless installation chain 		
		
		

Unit: mm

Installation

① Clip

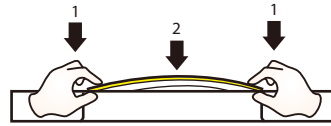
Fix the clips and aluminum profile via the screws.



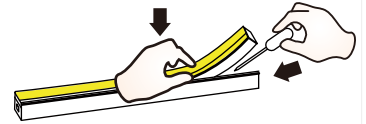
⚠ Suggestion: 2pcs clips per meter.

② Neon Series

Simultaneously install the neon from both ends.

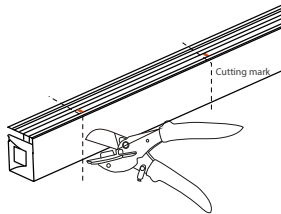


Should use tools to assist when remove the neon.



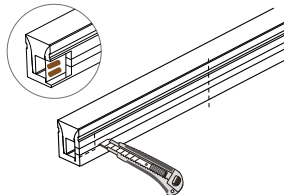
Cutting

① Cut the neon to be required length



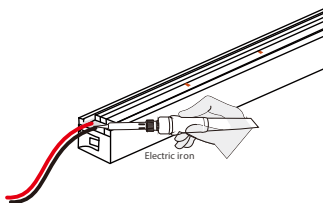
⚠ The minimum cutting unit is based on the cutting mark.

② Cut the side of neon, expose the soldering pad

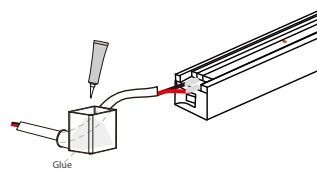


Soldering

① Solder the cable onto the PCB



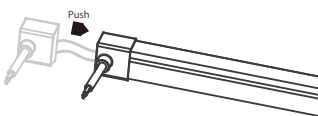
② Put the wire into and inject glue into the end cap



⚠ The amount of glue is about 1/3-1/2 of end cap.

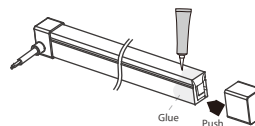
Install end cap

① Push the end cap to wrap end of neon

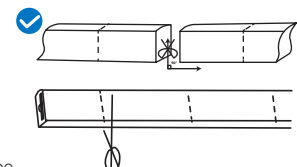


⚠ After the glue is injected, the neon needs to be laid flat for 2 hours to before other process.

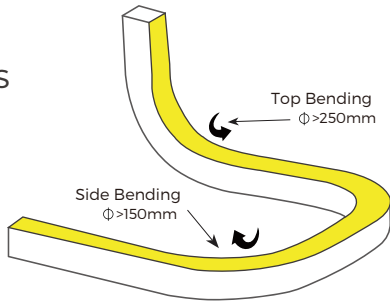
② Apply gel around the tail of neon and install the end cap



⚠ After the glue is injected, the neon needs to be laid flat for 2 hours to before project process. Glue will complete dry after 24hours.



3D bending series correct bending way.



PACKING

N.W /CTN(KG)	QTY / CTN(reel)	G.W/CTN(KG)	CTN Size(mm)
1.9	5	10.25	400x400x170
